



HEPA FILTERS

www.mikropor.com

Hepa Filters

High Efficiency Particulate Air Filters must undergo complete quality and process control from start to finish which involves raw material arrival checks, media integrity checks frame inspections and final product checks such as EN1822 certification, boxing and product labelling.

Mikropor conducts leak and efficiency test on all HEPA/ULPA filters. Test is done automatically according to EN1822 test standard and test report is supplied to the customers along with individual HEPA/ULPA filters.

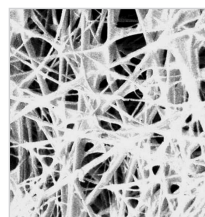
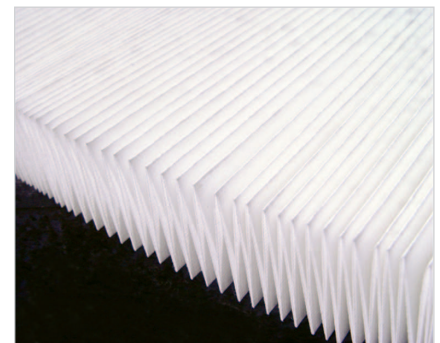
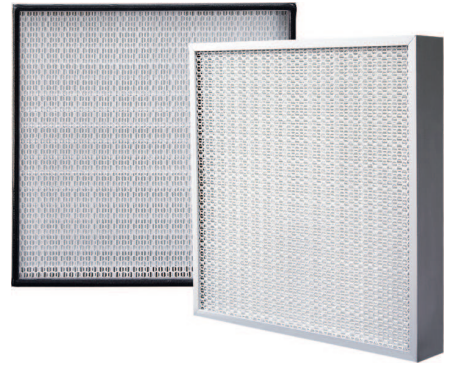
EN1822 Classification:

Classification is based on measuring the most penetrating particle size (MPPS) at a specific flow rate.

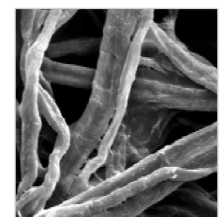
Filter Classification	Efficiency (%) @ MPPS		Penetration (%) @ MPPS	
	Overall Value	Local Value	Overall Penetration	Local Penetration
EN1822				
E10	85	-	15	-
E11	95	-	5	-
E12	99.5	-	0.5	-
H13	99.95	99.75	0.05	0.25
H14	99.995	99.975	0.005	0.025
U15	99.9995	99.9975	0.0005	0.0025
U16	99.99995	99.99975	0.00005	0.00025
U17	99.999995	99.9999	0.000005	0.0001

• International Classification of Cleanroom

STANDARDS			PARTICLE COUNT			
US 209E 1992	ISO 14644 1996	BS 5295 1989	0,1 micron (per m ³)	0,3 micron (per m ³)	0,5 micron (per m ³)	0,5 micron (per ft ³)
	CLASS 1		10			
	CLASS 2		100	10		
1	CLASS 3	C	1000	102	35	1
10	CLASS 4	D	10000	1020	353	10
100	CLASS 5	E/F	100000	10200	3530	100
1000	CLASS 6	G/H	1000000	102000	35300	1000
10000	CLASS 7	J			353000	10000
100000	CLASS 8	K			3530000	100000



Micro-Glass at magnification



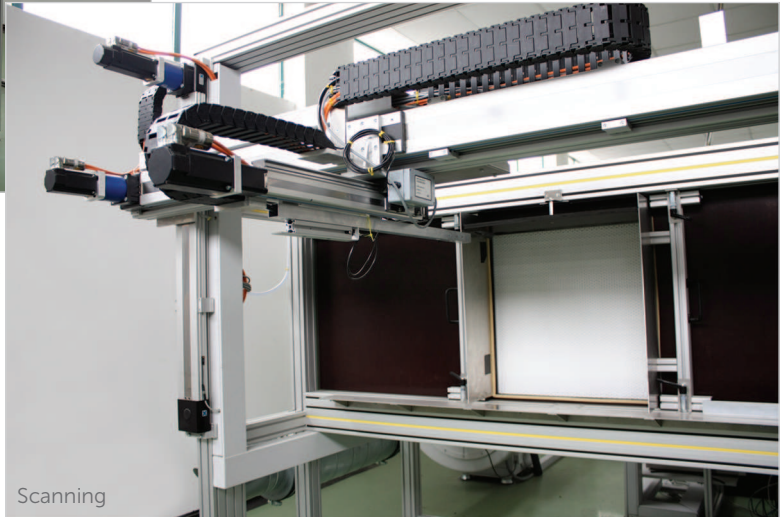
Cellulose at magnification



Test & Reporting System

Reporting:

EN1822 reports must show average and local efficiency at the stated flow rate, initial pressure drop and class of the filter.



Test report according to EN 1822-4

Filterdaten / Filter data / Filtré techniques

Seriennummer Production lot Numero de production	Filternummer Filter no. Numero de filtre	Mediencharge Medium lot no. Numero de lot du médium	Prüf-Datum Date of test Date du test	Prüfer Tester Identifiant du test
HFN-610/610/70-14AD2G		1259	2009-02-26	op
Filterabmessung (B x L x T) Filter dimensions (W x L x D) Dimensions du filtre (l x L x P)	Nennvolumenstrom Nominal flow rate Débit d'air nominal		Anfangsdruckdifferenz Initial pressure drop Perte de charge initiale	Filterklasse Filter class Classe de filtration
610 x 610 x 70mm	600m ³ /h			HEPA H14
Minimale integraler Abscheidegrad Minimum integral efficiency Minimum efficacité intégrale	Minimale lokale Abscheidegrad Minimum local efficiency Minimum efficacité locale		MPPS 0.20µm	
99,99500%	99,97500%			

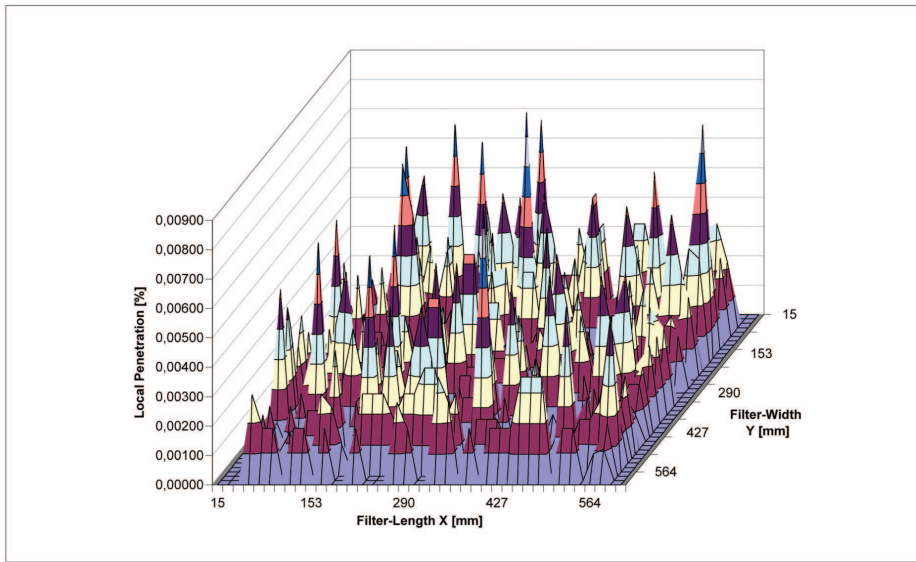
Prüfbedingungen / Test Conditions / Conditions de test

Prüfvolumenstrom Test flow rate Débit de test	Prüfaerosol Test aerosol Aérosol de test	Partikelgröße Particle size Taille de particule	Rohgaskonzentration Upstream concentration Concentration amont	Temperatur Temperature Température	Rel. Feuchte Rel. Humidity Humidité rel.
599.8m ³ /h	DEHS	0.10 - 0.50µm	8.02E+2#/cm ³	16.1°C	37,9%

Prüfergebnisse / Test Results / Résultats de test

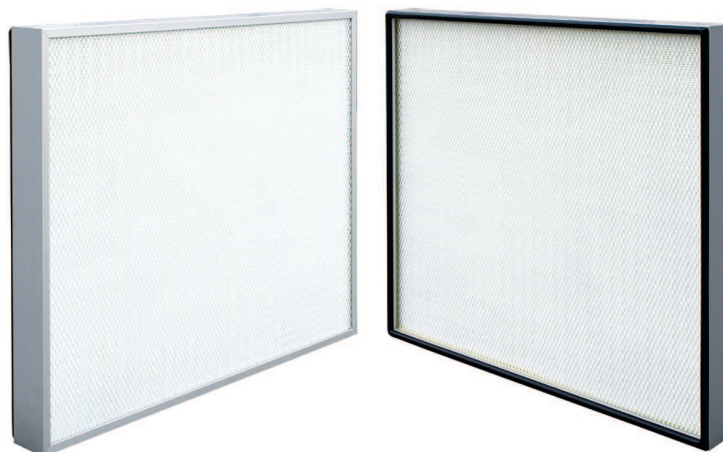
Integraler Abscheidegrad Integral efficiency Valeur intégrale d'efficacité	Minimale Abscheidegrad Minimum efficiency Minimum valeur d'efficacité	Druckdifferenz Pressure drop Perte de charge	Klassifizierung gemäß Testergebnis Classification to test result Classification selon résultat de test
99,99870%	99,99325%	121Pa	HEPA H14
Anzahl der gefundenen Leckstellen Number of leaks detected Nombre de fuites détectées	Lecktest gemäß EN 1822-4 Leakage test to EN 1822-4 Test de fuite selon EN 1822-4		
0	bestanden / passed / accepté		

Lecksignal / Leak signal / Signal de fuite:	171
Signalabstand / Signal difference / Signal difference:	99



HFN ALUMINUM SERIES / 66mm

EN 1822 EFFICIENCY: E10-U16
 MEDIA : Micro Glass Fibre
 SEPARATORS: Hotmelt
 PROTECTION GRIDS: Painted Aluminum on, both sides
 GASKET: Two component continuous, polyurethane
 FINAL PRESSURE DROP: 600 Pascals
 OPERATING TEMPERATURE: 80 °C degrees



LAMINAR FLOW FILTERS WITH 66mm DEPTH EXTRUDED ALUMINUM FRAME

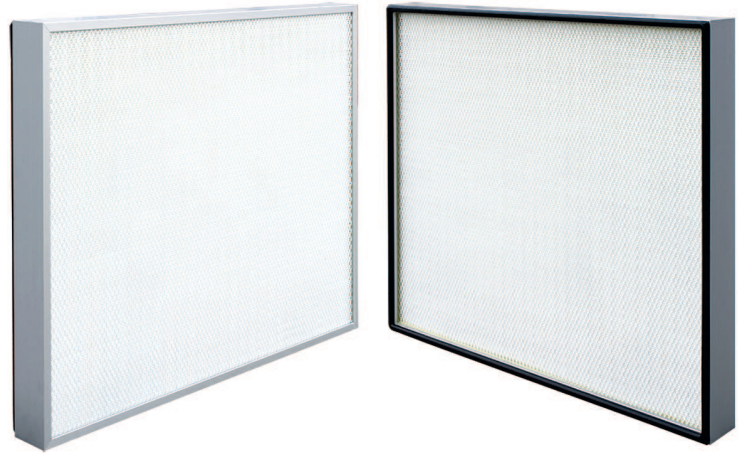
Part Number	Filter Class (EN 1822)	Width (mm)	Height (mm)	Depth (mm)	Media Area (m ²)	Air Flow (m ³ /h) (0,45m/s)	Pressure drop (Pascals)
E10 ▶							
HFN-305/305/66-10AD2G	E10	305	305	66	2,60	150	50
HFN-457/457/66-10AD2G	E10	457	457	66	5,80	335	50
HFN-457/610/66-10AD2G	E10	457	610	66	7,80	450	50
HFN-305/610/66-10AD2G	E10	305	610	66	5,20	300	50
HFN-610/610/66-10AD2G	E10	610	610	66	10,4	600	50
HFN-610/915/66-10AD2G	E10	610	915	66	15,6	900	50
HFN-610/1220/66-10AD2G	E10	610	1220	66	20,8	1200	50
HFN-610/1524/66-10AD2G	E10	610	1525	66	26,0	1500	50
HFN-610/1830/66-10AD2G	E10	610	1830	66	31,2	1800	50
HFN-610/762/66-10AD2G	E10	610	762	66	13,0	750	50
HFN-762/762/66-10AD2G	E10	762	762	66	16,2	935	50
HFN-915/915/66-10AD2G	E10	915	915	66	23,4	1350	50
HFN-915/1220/66-10AD2G	E10	915	1220	66	31,2	1800	50
E11 ▶							
HFN-305/305/66-11AD2G	E11	305	305	66	2,60	150	70
HFN-457/457/66-11AD2G	E11	457	457	66	5,80	335	70
HFN-457/610/66-11AD2G	E11	457	610	66	7,80	450	70
HFN-305/610/66-11AD2G	E11	305	610	66	5,20	300	70
HFN-610/610/66-11AD2G	E11	610	610	66	10,4	600	70
HFN-610/915/66-11AD2G	E11	610	915	66	15,6	900	70
HFN-610/1220/66-11AD2G	E11	610	1220	66	20,8	1200	70
HFN-610/1524/66-11AD2G	E11	610	1525	66	26,0	1500	70
HFN-610/1830/66-11AD2G	E11	610	1830	66	31,2	1800	70
HFN-610/762/66-11AD2G	E11	610	762	66	13,0	750	70
HFN-762/762/66-11AD2G	E11	762	762	66	16,2	935	70
HFN-915/915/66-11AD2G	E11	915	915	66	23,4	1350	70
HFN-915/1220/66-11AD2G	E11	915	1220	66	31,2	1800	70
E12 ▶							
HFN-305/305/66-12AD2G	E12	305	305	66	2,60	150	95
HFN-457/457/66-12AD2G	E12	457	457	66	5,80	335	95
HFN-457/610/66-12AD2G	E12	457	610	66	7,80	450	95
HFN-305/610/66-12AD2G	E12	305	610	66	5,20	300	95
HFN-610/610/66-12AD2G	E12	610	610	66	10,4	600	95

LAMINAR FLOW FILTERS WITH 66mm DEPTH EXTRUDED ALUMINUM FRAME

Part Number	Filter Class (EN 1822)	Width (mm)	Height (mm)	Depth (mm)	Media Area (m ²)	Air Flow (m ³ /h) (0,45m/s)	Pressure drop (Pascals)
E12 ▶							
HFN-610/915/66-12AD2G	E12	610	915	66	15,6	900	95
HFN-610/1220/66-12AD2G	E12	610	1220	66	20,8	1200	95
HFN-610/1524/66-12AD2G	E12	610	1525	66	26,0	1500	95
HFN-610/1830/66-12AD2G	E12	610	1830	66	31,2	1800	95
HFN-610/762/66-12AD2G	E12	610	762	66	13,0	750	95
HFN-762/762/66-12AD2G	E12	762	762	66	16,2	935	95
HFN-915/915/66-12AD2G	E12	915	915	66	23,4	1350	95
HFN-915/1220/66-12AD2G	E12	915	1220	66	31,2	1800	95
H13 ▶							
HFN-305/305/66-13AD2G	H13	305	305	66	2,60	150	110
HFN-457/457/66-13AD2G	H13	457	457	66	5,80	335	110
HFN-457/610/66-13AD2G	H13	457	610	66	7,80	450	110
HFN-305/610/66-13AD2G	H13	305	610	66	5,20	300	110
HFN-610/610/66-13AD2G	H13	610	610	66	10,4	600	110
HFN-610/915/66-13AD2G	H13	610	915	66	15,6	900	110
HFN-610/1220/66-13AD2G	H13	610	1220	66	20,8	1200	110
HFN-610/1524/66-13AD2G	H13	610	1525	66	26,0	1500	110
HFN-610/1830/66-13AD2G	H13	610	1830	66	31,2	1800	110
HFN-610/762/66-13AD2G	H13	610	762	66	13,0	750	110
HFN-762/762/66-13AD2G	H13	762	762	66	16,2	935	110
HFN-915/915/66-13AD2G	H13	915	915	66	23,4	1350	110
HFN-915/1220/66-13AD2G	H13	915	1220	66	31,2	1800	110
H14 ▶							
HFN-305/305/66-14AD2G	H14	305	305	66	2,60	150	120
HFN-457/457/66-14AD2G	H14	457	457	66	5,80	335	120
HFN-457/610/66-14AD2G	H14	457	610	66	7,80	450	120
HFN-305/610/66-14AD2G	H14	305	610	66	5,20	300	120
HFN-610/610/66-14AD2G	H14	610	610	66	10,4	600	120
HFN-610/915/66-14AD2G	H14	610	915	66	15,6	900	120
HFN-610/1220/66-14AD2G	H14	610	1220	66	20,8	1200	120
HFN-610/1524/66-14AD2G	H14	610	1524	66	26,0	1500	120
HFN-610/1830/66-14AD2G	H14	610	1830	66	31,2	1800	120
HFN-610/762/66-14AD2G	H14	610	762	66	13,0	750	120
HFN-762/762/66-14AD2G	H14	762	762	66	16,2	935	120
HFN-915/915/66-14AD2G	H14	915	915	66	23,4	1350	120
HFN-915/1220/66-14AD2G	H14	915	1220	66	31,2	1800	120
U15 ▶							
HFN-305/305/66-15AD2G	U15	305	305	66	2,60	150	140
HFN-457/457/66-15AD2G	U15	457	457	66	5,80	335	140
HFN-457/610/66-15AD2G	U15	457	610	66	7,80	450	140
HFN-305/610/66-15AD2G	U15	305	610	66	5,20	300	140
HFN-610/610/66-15AD2G	U15	610	610	66	10,4	600	140
HFN-610/915/66-15AD2G	U15	610	915	66	15,6	900	140
HFN-610/1220/66-15AD2G	U15	610	1220	66	20,8	1200	140
HFN-610/1524/66-15AD2G	U15	610	1525	66	26,0	1500	140
HFN-610/1830/66-15AD2G	U15	610	1830	66	31,2	1800	140
HFN-610/762/66-15AD2G	U15	610	762	66	13,0	750	140
HFN-762/762/66-15AD2G	U15	762	762	66	16,2	935	140
HFN-915/915/66-15AD2G	U15	915	915	66	23,4	1350	140
HFN-915/1220/66-15AD2G	U15	915	1220	66	31,2	1800	140

HFN ALUMINUM SERIES / 70mm

EN 1822 EFFICIENCY: E10-U16
 MEDIA : Micro Glass Fibre
 SEPARATORS: Hotmelt
 PROTECTION GRIDS: Painted Aluminum on, both sides
 GASKET: Two component continuous, polyurethane
 FINAL PRESSURE DROP: 600 Pascals
 OPERATING TEMPERATURE: 80 °C degrees



LAMINAR FLOW FILTERS WITH 70mm DEPTH EXTRUDED ALUMINUM FRAME

Part Number	Filter Class (EN 1822)	Width (mm)	Height (mm)	Depth (mm)	Media Area (m ²)	Air Flow (m ³ /h) (0,45m/s)	Pressure drop (Pascals)
E10							
HFN-305/305/70-10AD2G	E10	305	305	70	2,60	150	50
HFN-457/457/70-10AD2G	E10	457	457	70	5,80	335	50
HFN-457/610/70-10AD2G	E10	457	610	70	7,80	450	50
HFN-305/610/70-10AD2G	E10	305	610	70	5,20	300	50
HFN-610/610/70-10AD2G	E10	610	610	70	10,4	600	50
HFN-610/915/70-10AD2G	E10	610	915	70	15,6	900	50
HFN-610/1220/70-10AD2G	E10	610	1220	70	20,8	1200	50
HFN-610/1524/70-10AD2G	E10	610	1524	70	26,0	1500	50
HFN-610/1830/70-10AD2G	E10	610	1830	70	31,2	1800	50
HFN-610/762/70-10AD2G	E10	610	762	70	13,0	750	50
HFN-762/762/70-10AD2G	E10	762	762	70	16,2	935	50
HFN-915/915/70-10AD2G	E10	915	915	70	23,4	1350	50
HFN-915/1220/70-10AD2G	E10	915	1220	70	31,2	1800	50

E11							
HFN-305/305/70-11AD2G	E11	305	305	70	2,60	150	70
HFN-457/457/70-11AD2G	E11	457	457	70	5,80	335	70
HFN-457/610/70-11AD2G	E11	457	610	70	7,80	450	70
HFN-305/610/70-11AD2G	E11	305	610	70	5,20	300	70
HFN-610/610/70-11AD2G	E11	610	610	70	10,4	600	70
HFN-610/915/70-11AD2G	E11	610	915	70	15,6	900	70
HFN-610/1220/70-11AD2G	E11	610	1220	70	20,8	1200	70
HFN-610/1524/70-11AD2G	E11	610	1524	70	26,0	1500	70
HFN-610/1830/70-11AD2G	E11	610	1830	70	31,2	1800	70
HFN-610/762/70-11AD2G	E11	610	762	70	13,0	750	70
HFN-762/762/70-11AD2G	E11	762	762	70	16,2	935	70
HFN-915/915/70-11AD2G	E11	915	915	70	23,4	1350	70
HFN-915/1220/70-11AD2G	E11	915	1220	70	31,2	1800	70

E12							
HFN-305/305/70-12AD2G	E12	305	305	70	2,60	150	95
HFN-457/457/70-12AD2G	E12	457	457	70	5,80	335	95
HFN-457/610/70-12AD2G	E12	457	610	70	7,80	450	95
HFN-305/610/70-12AD2G	E12	305	610	70	5,20	300	95
HFN-610/610/70-12AD2G	E12	610	610	70	10,4	600	95
HFN-610/915/70-12AD2G	E12	610	915	70	15,6	900	95

LAMINAR FLOW FILTERS WITH 70mm DEPTH EXTRUDED ALUMINUM FRAME

Part Number	Filter Class (EN 1822)	Width (mm)	Height (mm)	Depth (mm)	Media Area (m ²)	Air Flow (m ³ /h) (0,45m/s)	Pressure drop (Pascals)
-------------	---------------------------	---------------	----------------	---------------	---------------------------------	--	----------------------------

E12

HFN-610/1220/70-12AD2G	E12	610	1220	70	20,8	1200	95
HFN-610/1524/70-12AD2G	E12	610	1524	70	26,0	1500	95
HFN-610/1830/70-12AD2G	E12	610	1830	70	31,2	1800	95
HFN-610/762/70-12AD2G	E12	610	762	70	13,0	750	95
HFN-762/762/70-12AD2G	E12	762	762	70	16,2	935	95
HFN-915/915/70-12AD2G	E12	915	915	70	23,4	1350	95
HFN-915/1220/70-12AD2G	E12	915	1220	70	31,2	1800	95

H13

HFN-305/305/70-13AD2G	H13	305	305	70	2,60	150	110
HFN-457/457/70-13AD2G	H13	457	457	70	5,80	335	110
HFN-457/610/70-13AD2G	H13	457	610	70	7,80	450	110
HFN-305/610/70-13AD2G	H13	305	610	70	5,20	300	110
HFN-610/610/70-13AD2G	H13	610	610	70	10,4	600	110
HFN-610/915/70-13AD2G	H13	610	915	70	15,6	900	110
HFN-610/1220/70-13AD2G	H13	610	1220	70	20,8	1200	110
HFN-610/1524/70-13AD2G	H13	610	1524	70	26,0	1500	110
HFN-610/1830/70-13AD2G	H13	610	1830	70	31,2	1800	110
HFN-610/762/70-13AD2G	H13	610	762	70	13,0	750	110
HFN-762/762/70-13AD2G	H13	762	762	70	16,2	935	110
HFN-915/915/70-13AD2G	H13	915	915	70	23,4	1350	110
HFN-915/1220/70-13AD2G	H13	915	1220	70	31,2	1800	110

H14

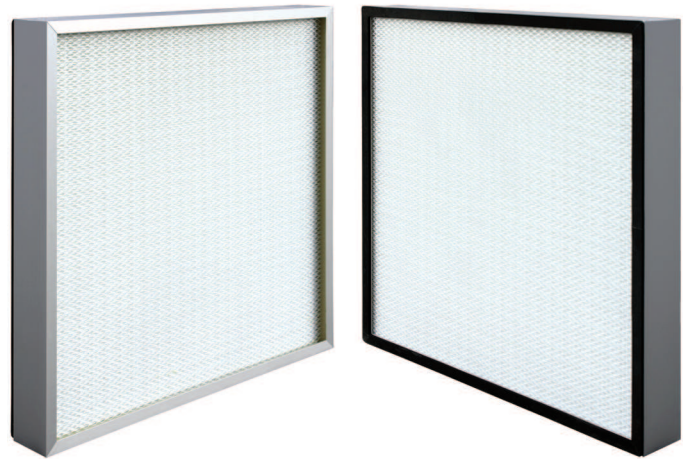
HFN-305/305/70-14AD2G	H14	305	305	70	2,60	150	120
HFN-457/457/70-14AD2G	H14	457	457	70	5,80	335	120
HFN-457/610/70-14AD2G	H14	457	610	70	7,80	450	120
HFN-305/610/70-14AD2G	H14	305	610	70	5,20	300	120
HFN-610/610/70-14AD2G	H14	610	610	70	10,4	600	120
HFN-610/915/70-14AD2G	H14	610	915	70	15,6	900	120
HFN-610/1220/70-14AD2G	H14	610	1220	70	20,8	1200	120
HFN-610/1524/70-14AD2G	H14	610	1524	70	26,0	1500	120
HFN-610/1830/70-14AD2G	H14	610	1830	70	31,2	1800	120
HFN-610/762/70-14AD2G	H14	610	762	70	13,0	750	120
HFN-762/762/70-14AD2G	H14	762	762	70	16,2	935	120
HFN-915/915/70-14AD2G	H14	915	915	70	23,4	1350	120
HFN-915/1220/70-14AD2G	H14	915	1220	70	31,2	1800	120

U15

HFN-305/305/70-15AD2G	U15	305	305	70	2,60	150	140
HFN-457/457/70-15AD2G	U15	457	457	70	5,80	335	140
HFN-457/610/70-15AD2G	U15	457	610	70	7,80	450	140
HFN-305/610/70-15AD2G	U15	305	610	70	5,20	300	140
HFN-610/610/70-15AD2G	U15	610	610	70	10,4	600	140
HFN-610/915/70-15AD2G	U15	610	915	70	15,6	900	140
HFN-610/1220/70-15AD2G	U15	610	1220	70	20,8	1200	140
HFN-610/1524/70-15AD2G	U15	610	1524	70	26,0	1500	140
HFN-610/1830/70-15AD2G	U15	610	1830	70	31,2	1800	140
HFN-305/762/70-15AD2G	U15	305	762	70	6,50	375	140
HFN-610/762/70-15AD2G	U15	610	762	70	13,0	750	140
HFN-762/762/70-15AD2G	U15	762	762	70	16,2	935	140
HFN-915/915/70-15AD2G	U15	915	915	70	23,4	1350	140
HFN-915/1220/70-15AD2G	U15	915	1220	70	31,2	1800	140

HFN ALUMINUM SERIES / 78mm

EN 1822 EFFICIENCY: E10-U16
 MEDIA : Micro Glass Fibre
 SEPARATORS: Hotmelt
 PROTECTION GRIDS: Painted Aluminum on, both sides
 GASKET: Neoprene or two component continuous, polyurethane
 FINAL PRESSURE DROP: 600 Pascals
 OPERATING TEMPERATURE: 80 °C degrees



LAMINAR FLOW FILTERS WITH 78mm DEPTH EXTRUDED ALUMINUM FRAME

Part Number	Filter Class (EN 1822)	Width (mm)	Height (mm)	Depth (mm)	Media Area (m ²)	Air Flow (m ³ /h) (0,45m/s)	Pressure drop (Pascals)
E10							
HFN-305/305/78-10AD2G	E10	305	305	78	2,60	150	50
HFN-457/457/78-10AD2G	E10	457	457	78	5,80	335	50
HFN-457/610/78-10AD2G	E10	457	610	78	7,80	450	50
HFN-305/610/78-10AD2G	E10	305	610	78	5,20	300	50
HFN-610/610/78-10AD2G	E10	610	610	78	10,4	600	50
HFN-610/915/78-10AD2G	E10	610	915	78	15,6	900	50
HFN-610/1220/78-10AD2G	E10	610	1220	78	20,8	1200	50
HFN-610/1524/78-10AD2G	E10	610	1524	78	26,0	1500	50
HFN-610/1830/78-10AD2G	E10	610	1830	78	31,2	1800	50
HFN-610/762/78-10AD2G	E10	610	762	78	13,0	750	50
HFN-762/762/78-10AD2G	E10	762	762	78	16,2	935	50
HFN-915/915/78-10AD2G	E10	915	915	78	23,4	1350	50
HFN-915/1220/78-10AD2G	E10	915	1220	78	31,2	1800	50

E11

HFN-305/305/78-11AD2G	E11	305	305	78	2,60	150	70
HFN-457/457/78-11AD2G	E11	457	457	78	5,80	335	70
HFN-457/610/78-11AD2G	E11	457	610	78	7,80	450	70
HFN-305/610/78-11AD2G	E11	305	610	78	5,20	300	70
HFN-610/610/78-11AD2G	E11	610	610	78	10,4	600	70
HFN-610/915/78-11AD2G	E11	610	915	78	15,6	900	70
HFN-610/1220/78-11AD2G	E11	610	1220	78	20,8	1200	70
HFN-610/1524/78-11AD2G	E11	610	1524	78	26,0	1500	70
HFN-610/1830/78-11AD2G	E11	610	1830	78	31,2	1800	70
HFN-610/762/78-11AD2G	E11	610	762	78	13,0	750	70
HFN-762/762/78-11AD2G	E11	762	762	78	16,2	935	70
HFN-915/915/78-11AD2G	E11	915	915	78	23,4	1350	70
HFN-915/1220/78-11AD2G	E11	915	1220	78	31,2	1800	70

E12

HFN-305/305/78-12AD2G	E12	305	305	78	2,60	150	70
HFN-457/457/78-12AD2G	E12	457	457	78	5,80	335	70
HFN-457/610/78-12AD2G	E12	457	610	78	7,80	450	70
HFN-305/610/78-12AD2G	E12	305	610	78	5,20	300	70
HFN-610/610/78-12AD2G	E12	610	610	78	10,4	600	70
HFN-610/915/78-12AD2G	E12	610	915	78	15,6	900	70
HFN-610/1220/78-12AD2G	E12	610	1220	78	20,8	1200	70

LAMINAR FLOW FILTERS WITH 78mm DEPTH EXTRUDED ALUMINUM FRAME

Part Number	Filter Class (EN 1822)	Width (mm)	Height (mm)	Depth (mm)	Media Area (m ²)	Air Flow (m ³ /h) (0,45m/s)	Pressure drop (Pascals)
E12 ▶							
HFN-610/1524/78-12AD2G	E12	610	1524	78	26,0	1500	95
HFN-610/1830/78-12AD2G	E12	610	1830	78	31,2	1800	95
HFN-610/762/78-12AD2G	E12	610	762	78	13,0	750	95
HFN-762/762/78-12AD2G	E12	762	762	78	16,2	935	95
HFN-915/915/78-12AD2G	E12	915	915	78	23,4	1350	95
HFN-915/1220/78-12AD2G	E12	915	1220	78	31,2	1800	95
H13 ▶							
HFN-305/305/78-13AD2G	H13	305	305	78	2,60	150	110
HFN-457/457/78-13AD2G	H13	457	457	78	5,80	335	110
HFN-457/610/78-13AD2G	H13	457	610	78	7,80	450	110
HFN-305/610/78-13AD2G	H13	305	610	78	5,20	300	110
HFN-610/610/78-13AD2G	H13	610	610	78	10,4	600	110
HFN-610/915/78-13AD2G	H13	610	915	78	15,6	900	110
HFN-610/1220/78-13AD2G	H13	610	1220	78	20,8	1200	110
HFN-610/1524/78-13AD2G	H13	610	1524	78	26,0	1500	110
HFN-610/1830/78-13AD2G	H13	610	1830	78	31,2	1800	110
HFN-610/762/78-13AD2G	H13	610	762	78	13,0	750	110
HFN-762/762/78-13AD2G	H13	762	762	78	16,2	935	110
HFN-915/915/78-13AD2G	H13	915	915	78	23,4	1350	110
HFN-915/1220/78-13AD2G	H13	915	1220	78	31,2	1800	110
H14 ▶							
HFN-305/305/78-14AD2G	H14	305	305	78	2,60	150	120
HFN-457/457/78-14AD2G	H14	457	457	78	5,80	335	120
HFN-457/610/78-14AD2G	H14	457	610	78	7,80	450	120
HFN-305/610/78-14AD2G	H14	305	610	78	5,20	300	120
HFN-610/610/78-14AD2G	H14	610	610	78	10,4	600	120
HFN-610/915/78-14AD2G	H14	610	915	78	15,6	900	120
HFN-610/1220/78-14AD2G	H14	610	1220	78	20,8	1200	120
HFN-610/1524/78-14AD2G	H14	610	1524	78	26,0	1500	120
HFN-610/1830/78-14AD2G	H14	610	1830	78	31,2	1800	120
HFN-610/762/7814AD2G	H14	610	762	78	13,0	750	120
HFN-762/762/78-14AD2G	H14	762	762	78	16,2	935	120
HFN-915/915/78-14AD2G	H14	915	915	78	23,4	1350	120
HFN-915/1220/78-14AD2G	H14	915	1220	78	31,2	1800	120
U15 ▶							
HFN-305/305/78-15AD2G	U15	305	305	78	2,60	150	140
HFN-457/457/78-15AD2G	U15	457	457	78	5,80	335	140
HFN-457/610/78-15AD2G	U15	457	610	78	7,80	450	140
HFN-305/610/78-15AD2G	U15	305	610	78	5,20	300	140
HFN-610/610/78-15AD2G	U15	610	610	78	10,4	600	140
HFN-610/915/78-15AD2G	U15	610	915	78	15,6	900	140
HFN-610/1220/78-15AD2G	U15	610	1220	78	20,8	1200	140
HFN-610/1524/78-15AD2G	U15	610	1524	78	26,0	1500	140
HFN-610/1830/78-15AD2G	U15	610	1830	78	31,2	1800	140
HFN-610/762/78-15AD2G	U15	610	762	78	13,0	750	140
HFN-762/762/78-15AD2G	U15	762	762	78	16,2	935	140
HFN-915/915/78-15AD2G	U15	915	915	78	23,4	1350	140
HFN-915/1220/78-15AD2G	U15	915	1220	78	31,2	1800	140